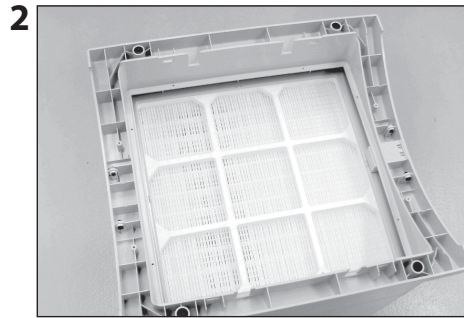


Mobility Casters

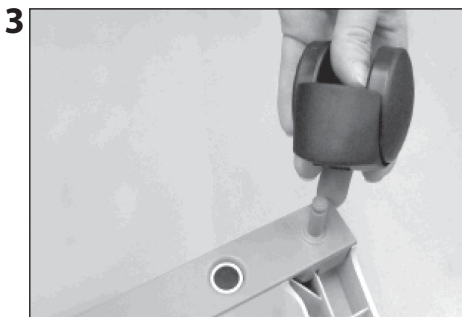
Removing Mobility Casters On Your IQAir Air Purifier



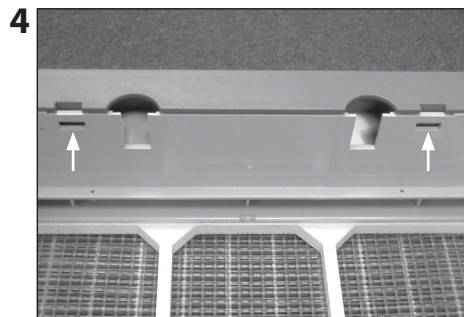
Switch the device off.



Turn the device upside down on a soft and clean area or surface.



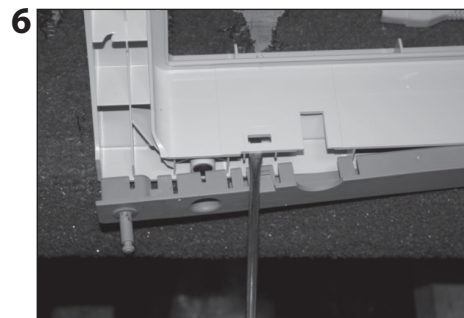
Remove each caster from the rail by pulling it straight off. The caster pins will be exposed.



There are two slotted tabs on each rail.



Using a flat-head screwdriver, press firmly into the slotted tab.

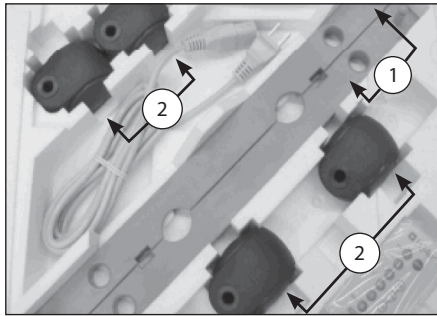


Use the screwdriver to gently loosen and lift the rail away from the base. Lift the rail out by hand. Repeat steps 5 and 6 for the second rail.

Refer to the instructions *Fitting Your Air Purifier with Casters*, located on the back of this form to install casters onto the air purifier.

Mobility Casters

Fitting Your Air Purifier With Casters

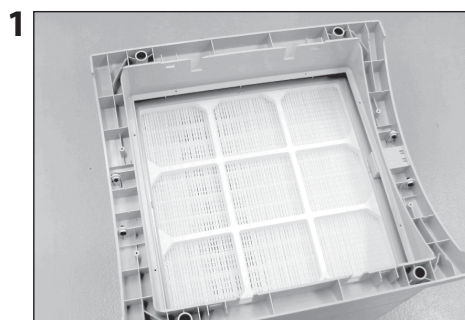


Attaching the supplied casters is optional. They make it easy to move the air purifier between rooms.

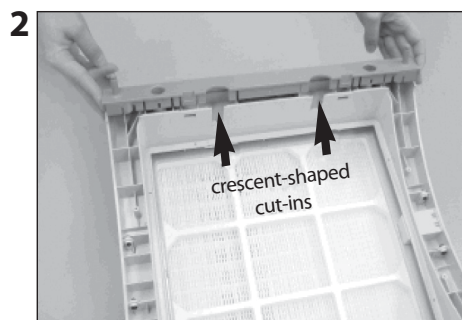
The Mobility Caster kit consists of:

1. mounting rail (x 2)
2. casters (x 4)

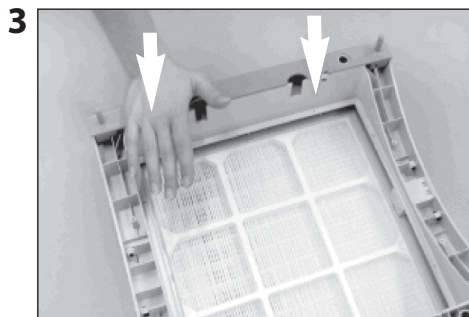
For installation simply follow the instructions below:



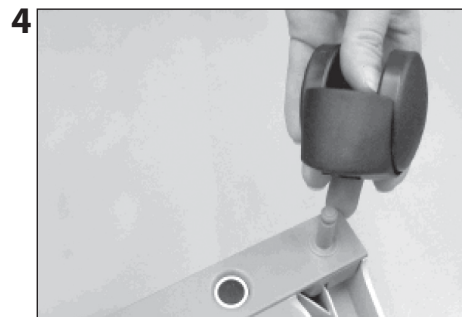
1 Turn the device upside down on a soft and clean area or surface.



2 Place the mounting rail on the purifier's base so that the holes line up with the black connector pins on the base. The cut-ins should face the center of the unit.



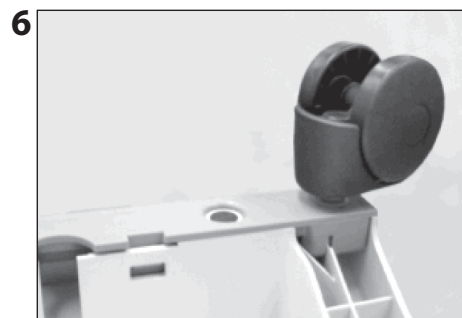
3 Press down until the mounting rail snaps into place. Repeat with second rail.



4 Place the caster onto caster pin.



5 Press on caster until it snaps into place. Repeat steps 4 and 5 with the remaining casters.



6 Ensure that each caster is securely fitted before placing the air purifier in its upright position onto the casters.